

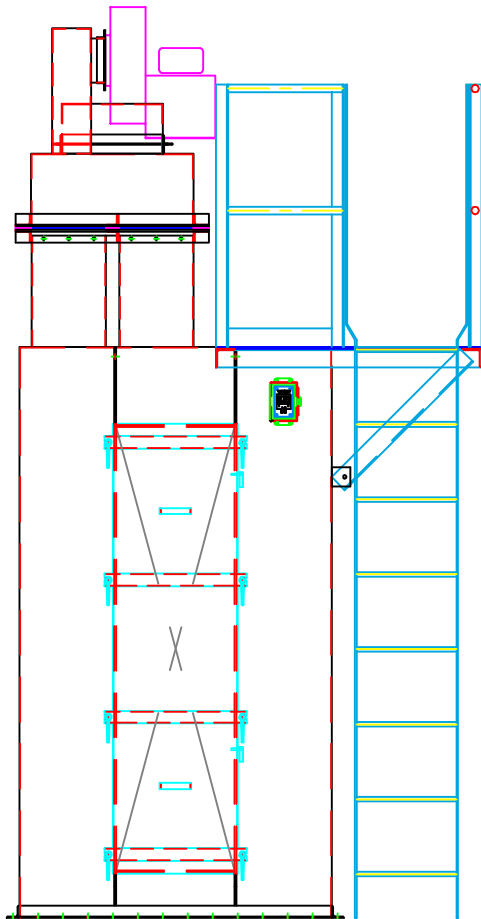
A TRULY UNIQUE BIN VENT FILTER.

A SINGLE FAN SUPPLIES BOTH THE SYSTEM AIR AND REVERSE AIR BAG CLEANING AIR.

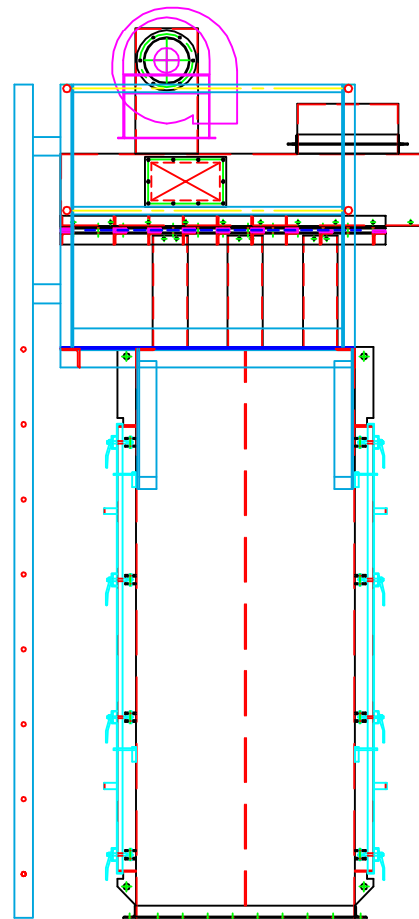
THIS IS DONE WITH ONE SLIDE GATE DRIVEN BY A 1/4 HP GEAR MOTOR.

NO SHUT DOWN FOR CLEANING, ON LINE CLEANING.

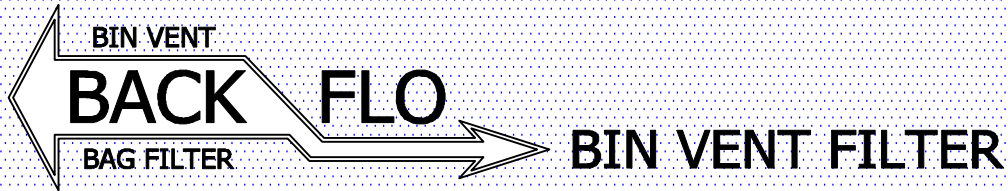
NO COMPRESSED AIR LINES TO INSTALL OR TO MAINTAIN.



NO COMPRESSED AIR!



NO BAG SHAKING!



DIMENSIONAL CHART

MODEL	BAGS	SQ. FT. MEDIA	DIMENSIONS (IN INCHES)		
			A	B	C
BF-16-5/7-176	16	176	35"	34"	152"
BF-20-5/7-220	20	220	35"	42"	152"
BF-24-5/7-264	24	264	35"	50"	152"
BF-30-5/7-330	30	330	51"	42"	152"

APPROXIMATE DIMENSIONS ONLY, SUBJECT TO CHANGE WITHOUT NOTICE.

#126 FAN/5 HP ENGINEERING DATA

THE FAN PROVIDES BOTH SYSTEM AIR AND BACK-FLO AIR FOR BAG CLEANING.
 THE MAXIMUM FILTERING VOLUME IS 1400 CFM @ 5" S.P.
 THE MAXIMUM BACK-FLO VOLUME IS 1800 CFM @ 2" S.P.

MODEL	AIR TO CLOTH RATIO 1,000 CFM	AIR TO CLOTH RATIO 1,400 CFM
BF-16-5-176	5.68 TO 1	7.95 TO 1
BF-20-5-220	4.55 TO 1	6.36 TO 1
BF-24-5-264	3.80 TO 1	5.30 TO 1
BF-30-5-330	3.00 TO 1	4.24 TO 1

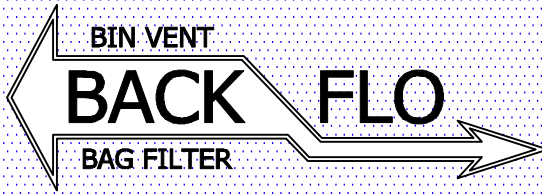
THE BACK-FLO FILTER CLEANS THE BAGS WHILE FILTERING THE SYSTEM AIR AT THE SAME TIME—MEANING THAT IT CLEANS ON LINE.

THE FOLLOWING AIR FLOW CHARTS INDICATE THE FILTER AIR TO CLOTH RATIOS FOR TWO NORMAL AIR VOLUME SYSTEM CONDITIONS THAT THE #126 NYB FAN AND #146 FAN ARE DESIGNED TO HANDLE.

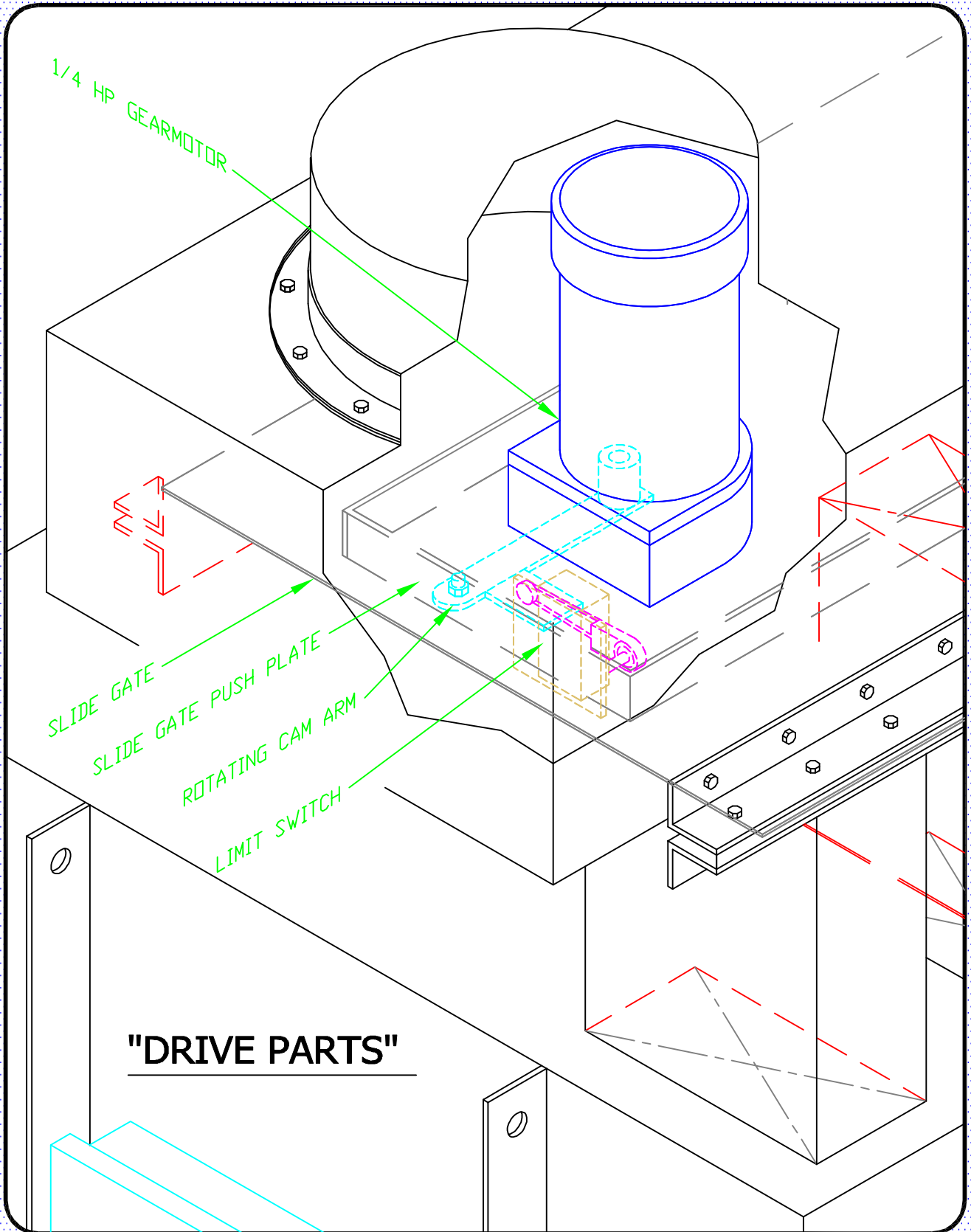
#146 FAN/7.5 HP ENGINEERING DATA

THE FAN PROVIDES BOTH SYSTEM AIR AND BACK-FLO AIR FOR BAG CLEANING.
 THE MAXIMUM FILTERING VOLUME IS 2,000 CFM @ 5" S.P.
 THE MAXIMUM BACK-FLO VOLUME IS 2,500 CFM @ 2" S.P.

MODEL	AIR TO CLOTH RATIO 1,500 CFM	AIR TO CLOTH RATIO 2,000 CFM
BF-16-7-176	8.52 TO 1	11.36 TO 1
BF-20-7-220	6.82 TO 1	9.09 TO 1
BF-24-7-264	5.68 TO 1	7.78 TO 1
BF-30-7-330	4.55 TO 1	6.06 TO 1



DRIVE PARTS
BIN VENT FILTER



1/4 HP GEARMOTOR

SLIDE GATE

SLIDE GATE PUSH PLATE

ROTATING CAM ARM

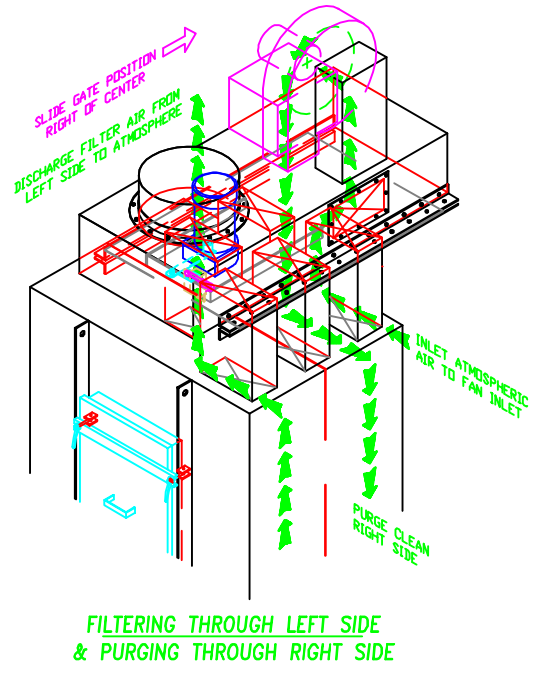
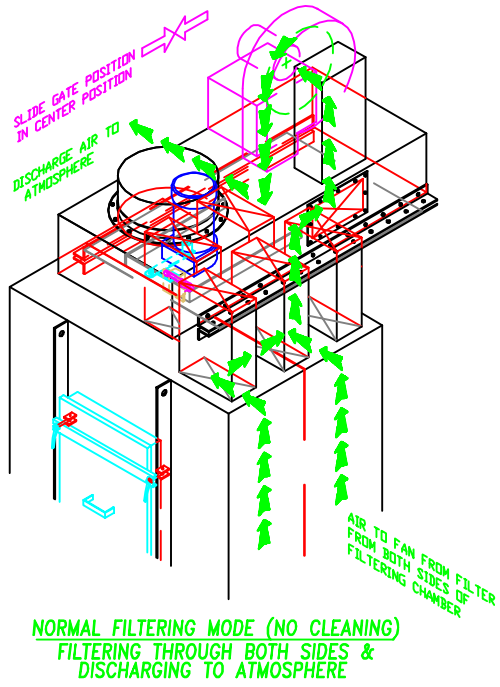
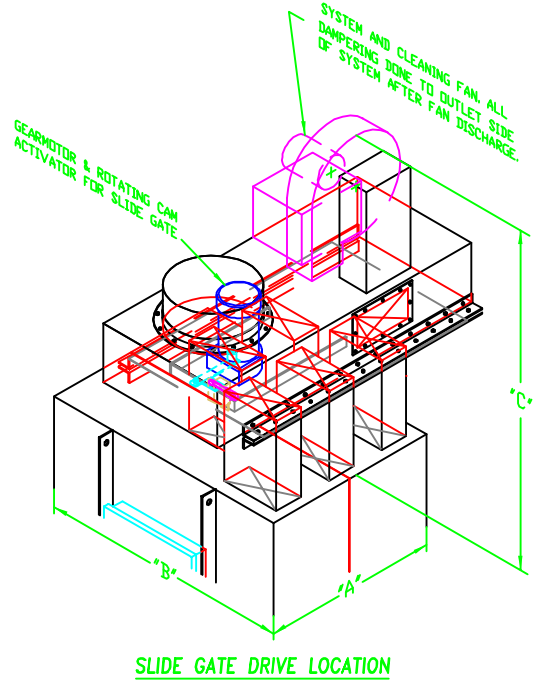
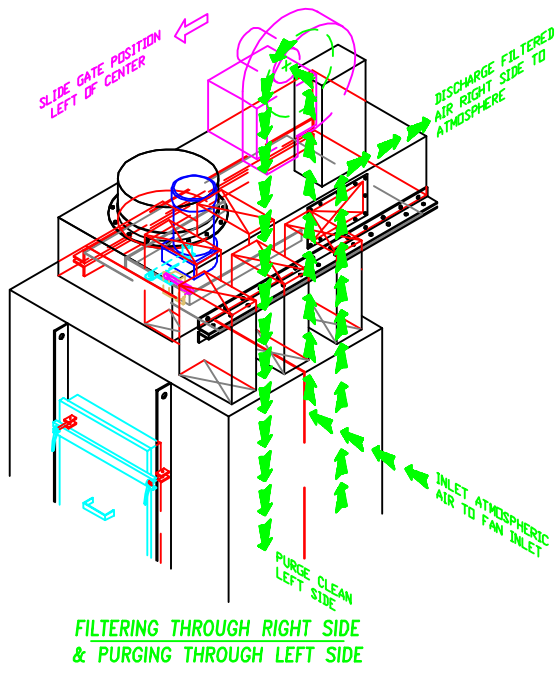
LIMIT SWITCH

"DRIVE PARTS"

←
BIN VENT
BACK
FLO
OPERATION MODES
→

BAG FILTER
BIN VENT FILTER

PURGE CLEAN TIMING IS BASED UPON ONE RPM TAKING 10 SECONDS, GIVING APPROXIMATELY 2.5 SECONDS FOR EACH SIDE OF THE GATE TO BE OPEN NEARLY 100% WITH THE REMAINING 5 SECONDS BEING TRAVEL TIME. THE 10 SECOND CYCLE CLEANS BOTH SIDES. THIS CYCLE IS TO BE CONTROLLED BY A TIMER AND CAN BE ADJUSTED AS NEEDED.



BIN VENT FILTER OPERATIONAL MODES & AIR FLOW PATTERNS

SEE DIMENSION CHART (NEXT PAGE) FOR DIMENSIONS "A", "B" & "C"