



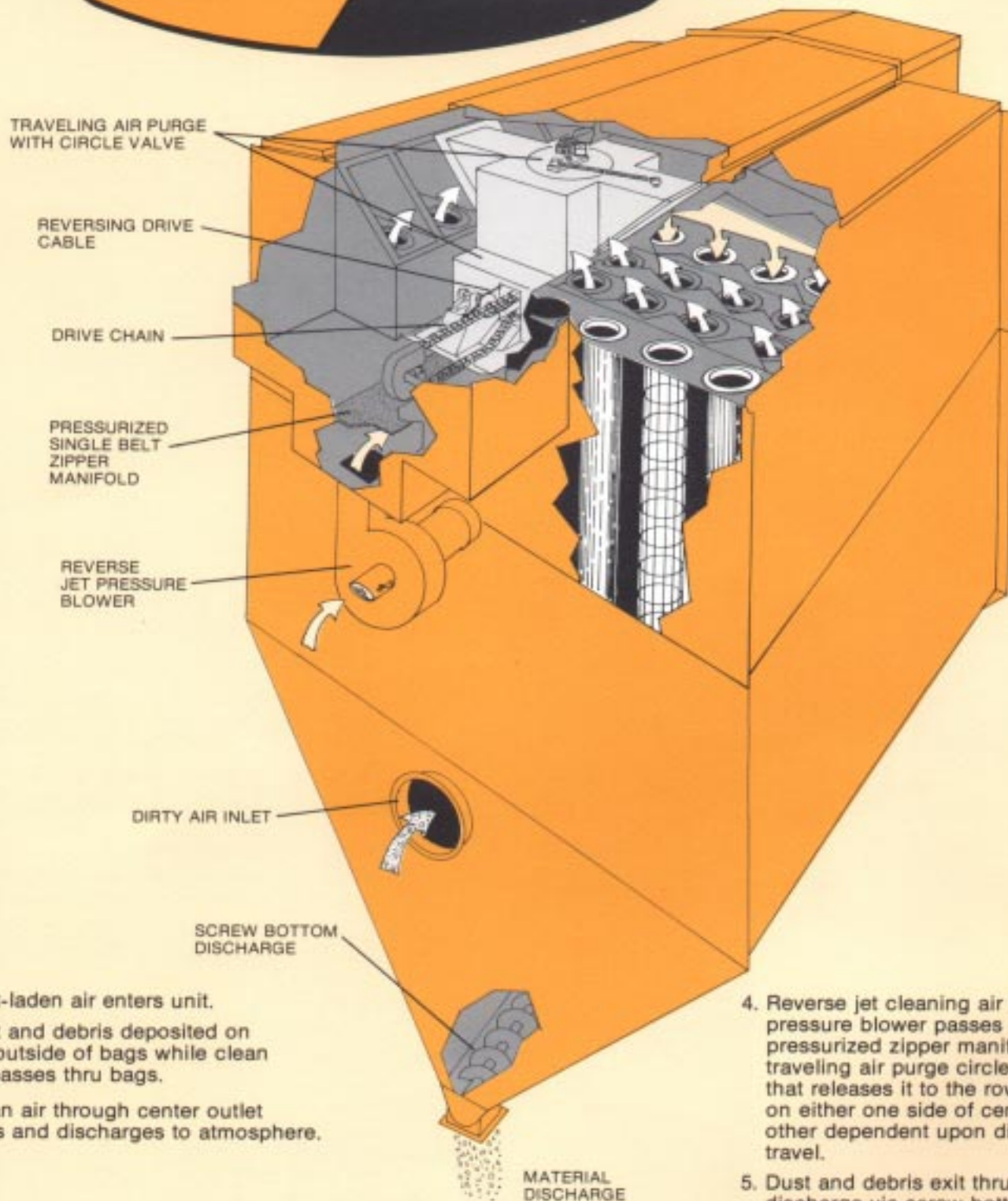
for
**DUST
AND
AIR
POLLUTION
CONTROL**



PATENT NOS. 4-097-254
4-144-042

THE

FILTRA KLEEN



1. Dust-laden air enters unit.
2. Dust and debris deposited on the outside of bags while clean air passes thru bags.
3. Clean air through center outlet ports and discharges to atmosphere.

4. Reverse jet cleaning air enters pressure blower passes through pressurized zipper manifold to traveling air purge circle valve that releases it to the row of bags on either one side of center or the other dependent upon direction of travel.
5. Dust and debris exit thru material discharge via screw bottom hopper.

DESIGN

FILTRA-KLEEN is a continuous cleaning high pressure reverse jet filter that utilizes a high pressure centrifugal fan (pressure blower) to supply the cleaning air. A unique traveling "circle valve" is used to direct the air to the proper row of bags to be cleaned with a quick snap action motion that allows for maximum bag cleaning action.

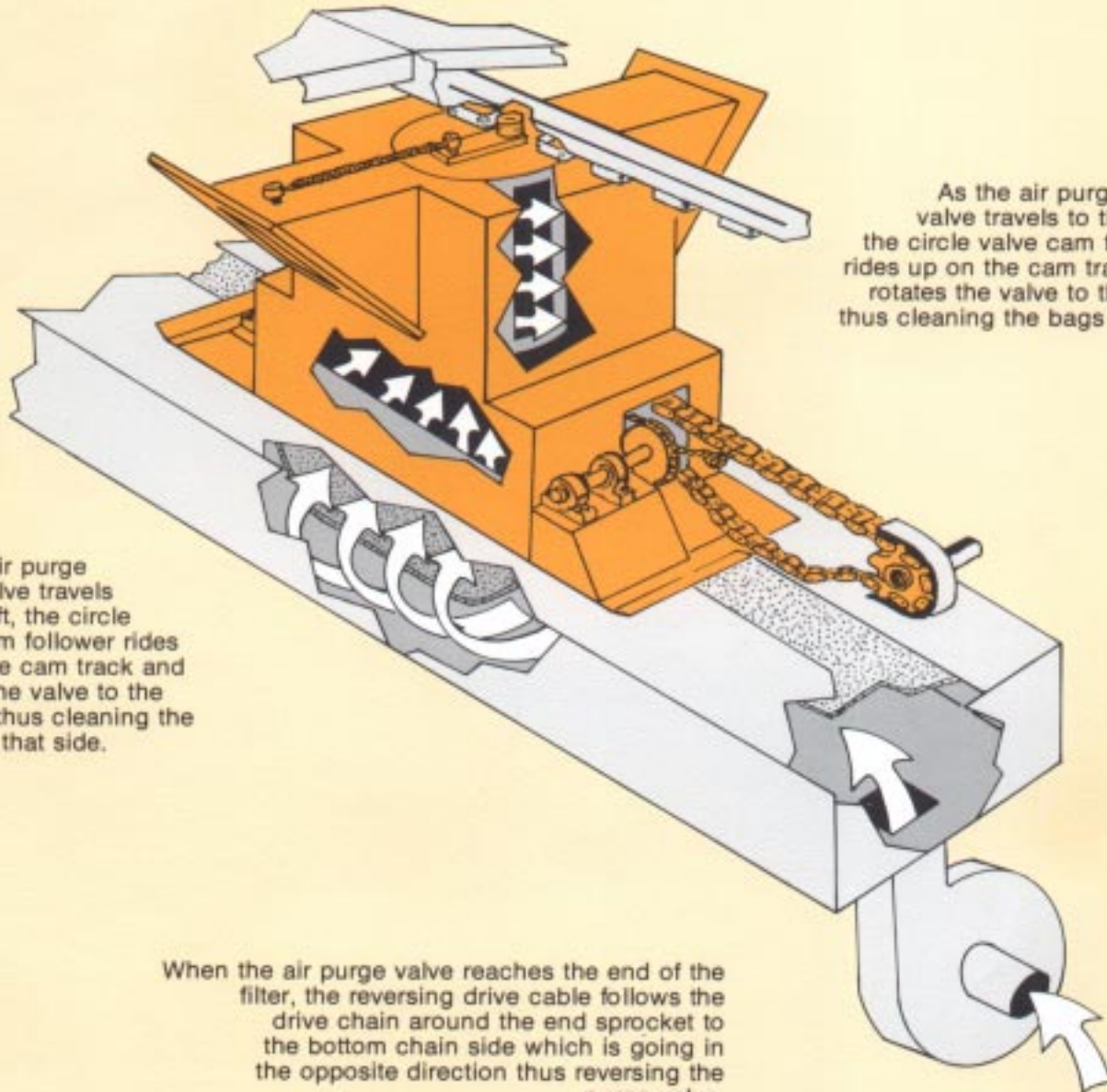
This traveling "circle valve" is what makes the FILTRA-KLEEN uniquely different from other filters. As it travels in one direction, it blows down the bags on one side of the center of the unit, and while traveling in the opposite direction the bags on the opposite side are cleaned.

BY



THE REVERSE AIR-PURGE SYSTEM

The design of the cam track configuration coupled with the unique swivel action of the circle valve itself naturally creates the desired snap action on both the valve opening and closing cycle.



As the air purge circle valve travels to the right the circle valve cam follower rides up on the cam track and rotates the valve to the right thus cleaning the bags on that side.

As the air purge circle valve travels to the left, the circle valve cam follower rides up on the cam track and rotates the valve to the left and thus cleaning the bags on that side.

When the air purge valve reaches the end of the filter, the reversing drive cable follows the drive chain around the end sprocket to the bottom chain side which is going in the opposite direction thus reversing the purge valve.

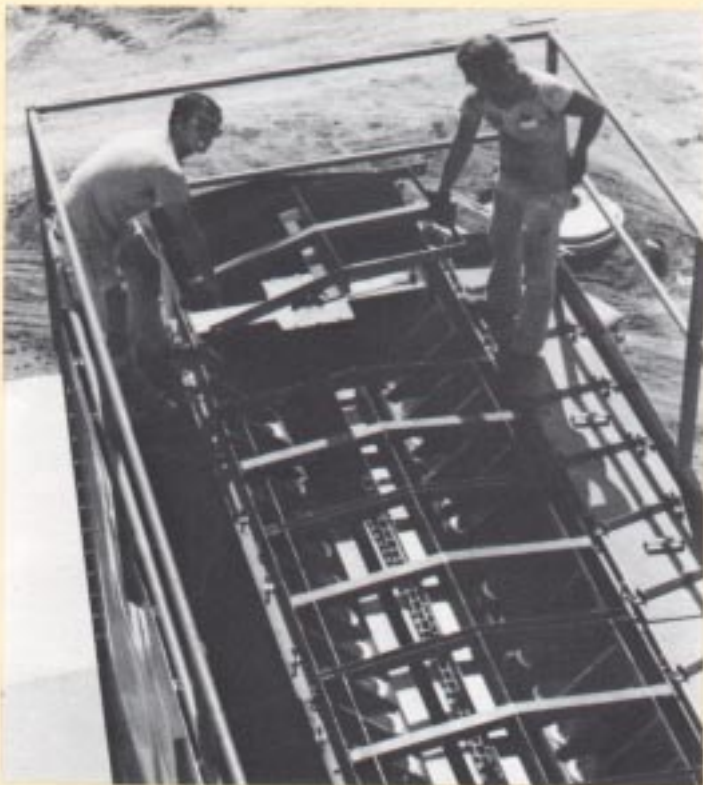
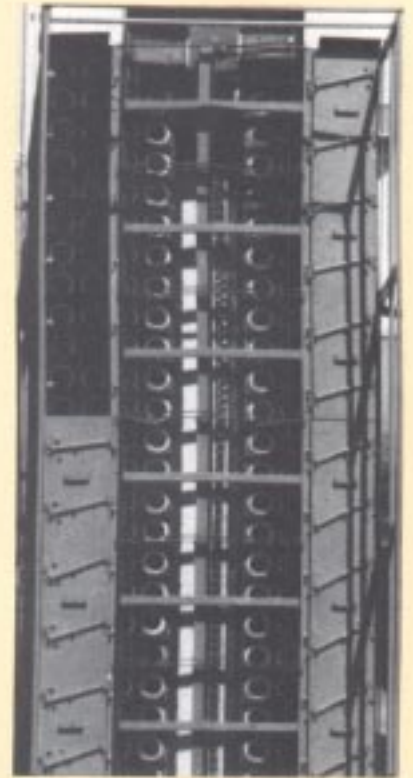
This simply means that the back purge air system needs to be only half the size it would have to be if it were required to blow down all of the bags in each row for the total width of the filter if the reverse air were introduced from one side of the filter and not in the center.

The advantages of this is quite obvious. The operational advantages of one single traveling valve coupled with a self-contained pressure blower are also obvious. A lack of multiple valves or mechanisms, as well as a lack of compressed air, timers, solenoid valves, etc. makes the FILTRA-KLEEN a truly simple unit to maintain and operate.

CV FILTRA-KLEEN ACCESS AND SERVICE ARRANGEMENT



Top panels are actually quickly removable lids to provide easy service and maximum access area.



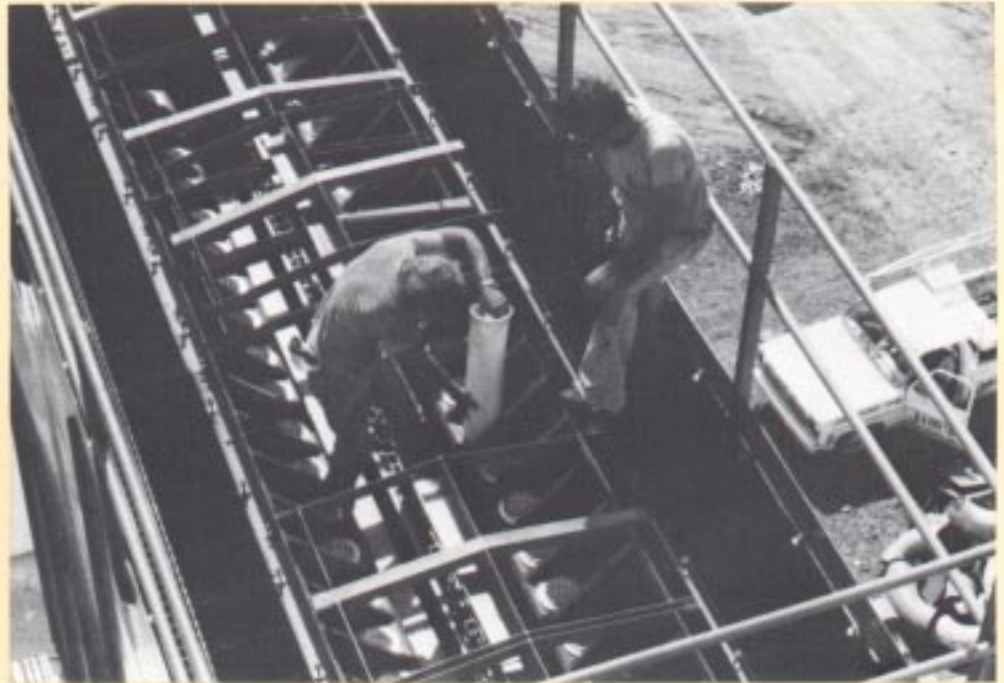
Simple pull-out removable sections of center support grid pieces for easy access to circle valve.

BAG & CAGE — DESIGN & SERVICE



HOW IT'S DONE

1. Insert bag with snap ring depressed.
2. Release end ring and allow snap ring to expand into seated position.
3. Insert cage into bag.



Bag removal is the reverse sequence of the above illustrated installation.

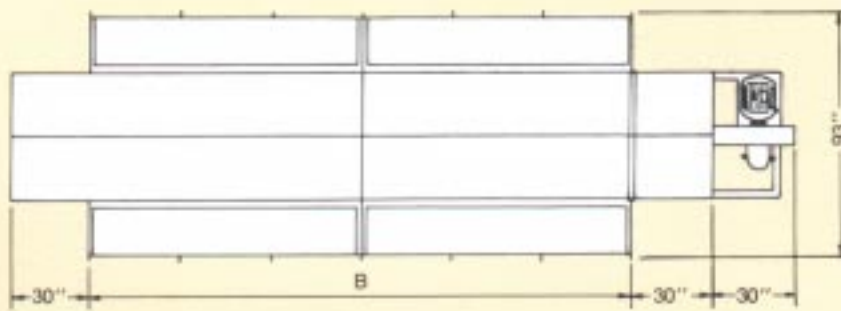
UNIT SPECIFICATIONS AND DIMENSIONS

MODEL NUMBER	Sq. Ft. Cloth	No. of Bags	Length of Bags in Ft.	Pressure Blower H.P.	Screw H.P.	Air-Purge Drive H.P.	Dim. "A"	Dim. "B"
2X2CV250-1000	1,000	64	10	10	1	1/2	136 1/2	69
2X2CV300-1200	1,200	64	12	15	1	1/2	159 1/2	69
2X2CV350-1400	1,400	64	14	15	1	1/2	183 1/2	69
2X3CV250-1500	1,500	96	10	10	1	1/2	136 1/2	103 1/2
2X3CV300-1800	1,800	96	12	15	1	1/2	159 1/2	103 1/2
2X3CV350-2100	2,100	96	14	15	1	1/2	183 1/2	103 1/2
2X4CV250-2000	2,000	128	10	10	1	1/2	136 1/2	138
2X4CV300-2400	2,400	128	12	15	1	1/2	159 1/2	138
2X4CV350-2800	2,800	128	14	15	1	1/2	183 1/2	138
2X5CV250-2500	2,500	160	10	10	2	1/2	136 1/2	172 1/2
2X5CV300-3000	3,000	160	12	15	2	1/2	136 1/2	172 1/2
2X5CV350-3500	3,500	160	14	15	2	1/2	183 1/2	172 1/2
2X6CV250-3000	3,000	192	10	15	2	1/2	136 1/2	207
2X6CV300-3600	3,600	192	12	20	2	1/2	159 1/2	207
2X6CV350-4200	4,200	192	14	20	2	1/2	183 1/2	207
2X7CV250-3500	3,500	224	10	20	2	1/2	136 1/2	241 1/2
2X7CV300-4200	4,200	224	12	20	2	1/2	159 1/2	241 1/2
2X7CV350-4900	4,900	224	14	20	2	1/2	183 1/2	241 1/2
2X8CV250-4000	4,000	256	10	20	2	1/2	136 1/2	276
2X8CV300-4800	4,800	256	12	20	2	1/2	159 1/2	276
2X8CV350-5600	5,600	256	14	20	2	1/2	183 1/2	276
2X9CV250-4500	4,500	288	10	20	3	1/2	136 1/2	310 1/2
2X9CV300-5400	5,400	288	12	20	3	1/2	159 1/2	310 1/2
2X9CV350-6300	6,300	288	14	20	3	1/2	183 1/2	310 1/2
2X10CV250-5000	5,000	320	10	20	3	1/2	136 1/2	345
2X10CV300-6000	6,000	320	12	20	3	1/2	159 1/2	345
2X10CV350-7000	7,000	320	14	20	3	1/2	183 1/2	345
2X11CV250-5500	5,500	352	10	20	3	3/4	136 1/2	379 1/2
2X11CV300-6600	6,600	352	12	25	3	3/4	159 1/2	379 1/2
2X11CV350-7700	7,700	352	14	25	3	3/4	183 1/2	379 1/2
2X12CV250-6000	6,000	384	10	25	3	3/4	136 1/2	414
2X12CV300-7200	7,200	384	12	25	3	3/4	159 1/2	414
2X12CV350-8400	8,400	384	14	25	3	3/4	183 1/2	414
2X13CV250-6500	6,500	416	10	25	3	3/4	136 1/2	448 1/2
2X13CV300-7800	7,800	416	12	25	3	3/4	159 1/2	448 1/2
2X13CV350-9100	9,100	416	14	25	3	3/4	183 1/2	448 1/2
2X14CV250-7000	7,000	448	10	25	3	3/4	136 1/2	483
2X14CV300-8400	8,400	448	12	25	3	3/4	159 1/2	483
2X14CV350-9800	9,800	448	14	25	3	3/4	183 1/2	483
2X15CV250-7500	7,500	480	10	25	3	3/4	136 1/2	517 1/2
2X15CV300-9000	9,000	480	12	25	3	3/4	159 1/2	517 1/2
2X15CV350-10500	10,500	480	14	25	3	3/4	183 1/2	517 1/2
2X16CV250-8000	8,000	512	10	25	5	3/4	136 1/2	552
2X16CV300-9600	9,600	512	12	30	5	3/4	159 1/2	552
2X16CV350-11200	11,200	512	14	30	5	3/4	183 1/2	552
2X17CV250-8500	8,500	544	10	30	5	3/4	136 1/2	586 1/2
2X17CV300-10200	10,200	544	12	30	5	3/4	159 1/2	586 1/2
2X17CV350-11900	11,900	544	14	30	5	3/4	183 1/2	586 1/2
2X18CV250-9000	9,000	576	10	30	5	3/4	136 1/2	621
2X18CV300-10800	10,800	576	12	30	5	3/4	159 1/2	621
2X18CV350-12600	12,600	576	14	30	5	3/4	183 1/2	621
2X19CV250-9500	9,500	608	10	30	5	3/4	136 1/2	655 1/2
2X19CV300-11400	11,400	608	12	30	5	3/4	159 1/2	655 1/2
2X19CV350-13300	13,300	608	14	30	5	3/4	183 1/2	655 1/2
2X20CV250-10000	10,000	640	10	30	5	3/4	136 1/2	690
2X20CV300-12000	12,000	640	12	30	5	3/4	159 1/2	690
2X20CV350-14000	14,000	640	14	30	5	3/4	183 1/2	690

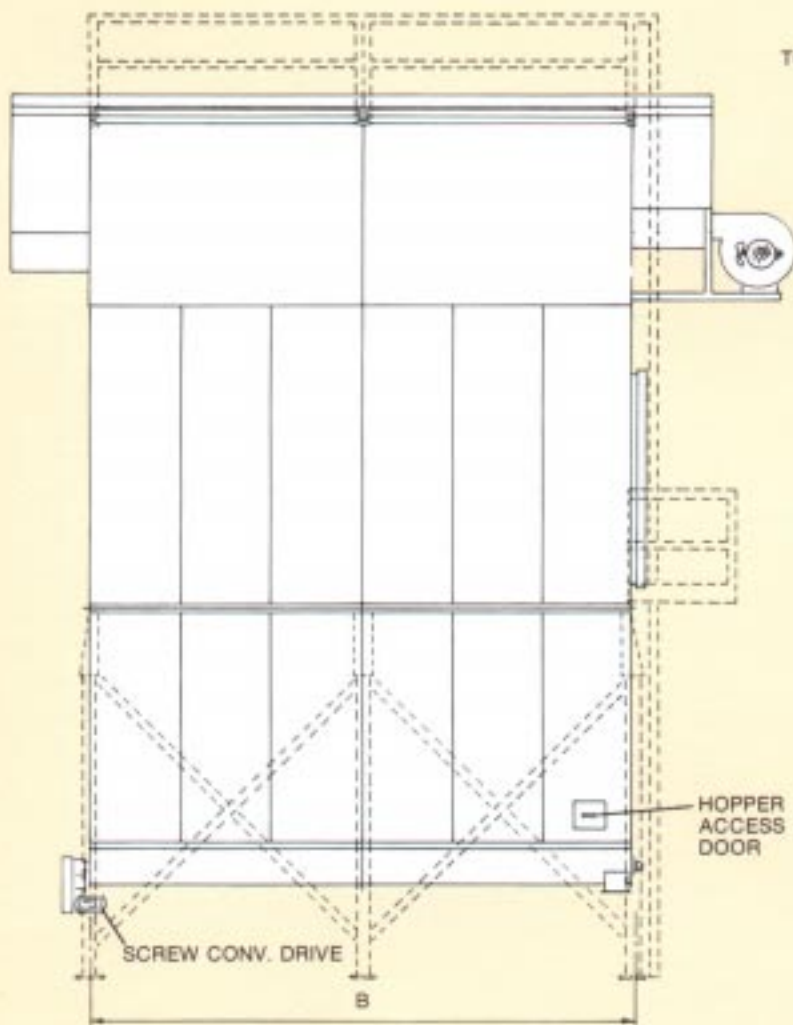
NOTE: All dimensions are in inches. We reserve the right to change dimensions without notice.

MODEL NUMBER DESIGNATION

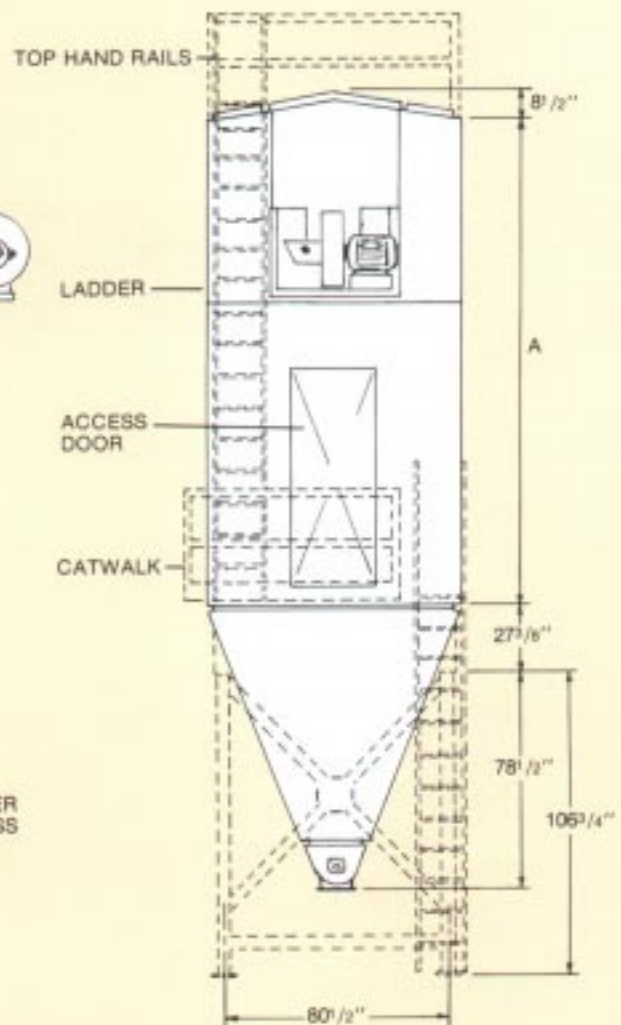
2
(Two Wide)
X
4
(Four Long)
CV
(Circle Valve)
350
(Cloth Per module)
2800
(Total Cloth in Sq. Ft.)



PLAN VIEW



FRONT VIEW



SIDE VIEW

WHEN ORDERING SPECIFY

- Type of motor enclosure and voltage
- Number of body access doors (all units are equipped with one standard door)
- Type of filter media

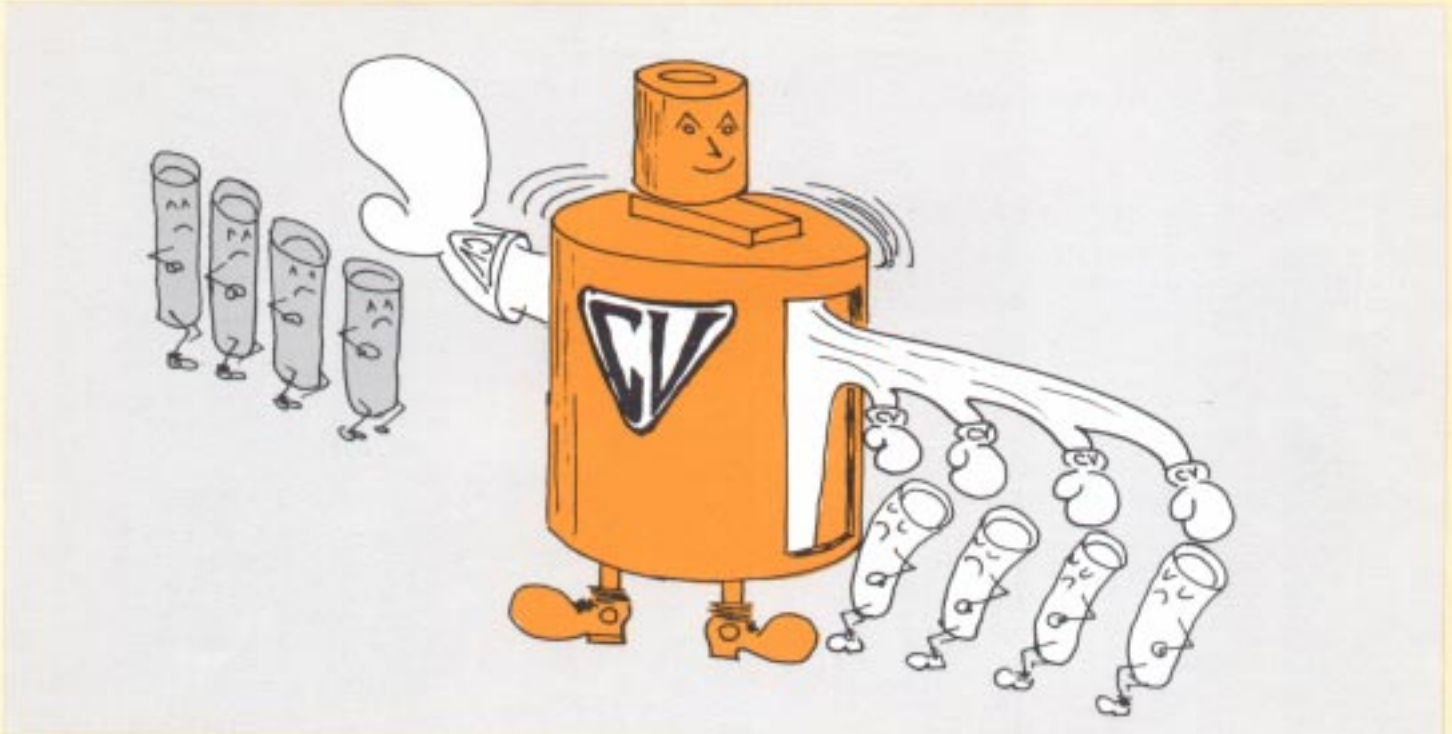
If negative pressure give amount in inches of water

- Standard legs
- Ladders and catwalks
- Hand rails

THE



DIVIDE AND CONQUER really works when it comes to cleaning filter bags.



By only attacking one half of a row of filter bags at a time, circle valve delivers the knock-out blow with ease. The result is an easier way to clean the bag with a minimum of energy exertion.

OTHER + 's

CLEANER AIR is possible with FILTRA-KLEEN because felted filter media is utilized. Common collection efficiencies of 99.99% ± by weight are possible.

HIGH AIR TO CLOTH RATIOS are common due to the reverse cleaning power created by the centrifugal pressure blower and circle valve snap action.

MODULAR CONSTRUCTION means that the CV FILTRA-KLEEN can be provided in almost unlimited sizes to meet your requirements and still only require one single circle valve mechanism. Future add-on sections can also be incorporated while utilizing the one original air purge cleaning system. Modular construction allows the filter to be divided to accept multiple systems.

