



CALL (913) 677-5777
FAX (913) 677-0674

E-Mail techair@techairinc.com

tech-airjet

BAGHOUSE DUST FILTERS

Model 'X' pulse jet

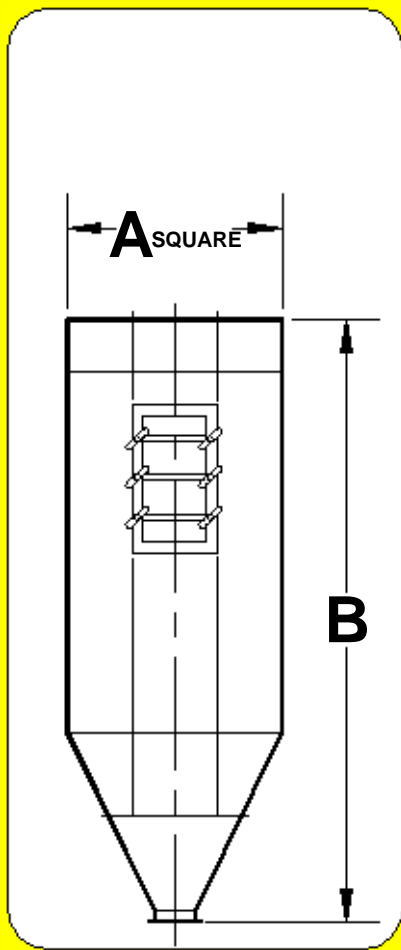
COMPARE QUALITY STANDARD FEATURES

- Carbon or Stainless steel welded construction with exterior steel surfaces given one prime coat of paint, and Factory assembled in modules to suit the most efficient truck shipment requirements and minimize field installation.
- 6" Dia. compressed air header.
- 1" Dia. Diaphragm valves standard.
- NEMA 4 solenoid enclosure.
- 16 Oz Polyester felt filter bags (other media available).
- 12 Wire - #11 GA. carbon steel bag cages.
- Sequential Timer in NEMA 4 Enclosure.



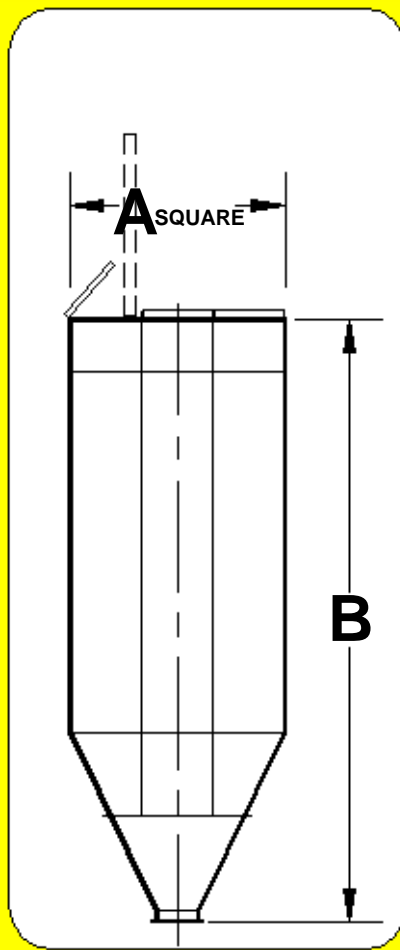
Welded Steel

TYPICAL DIMENSIONS AND SPECIFICATIONS



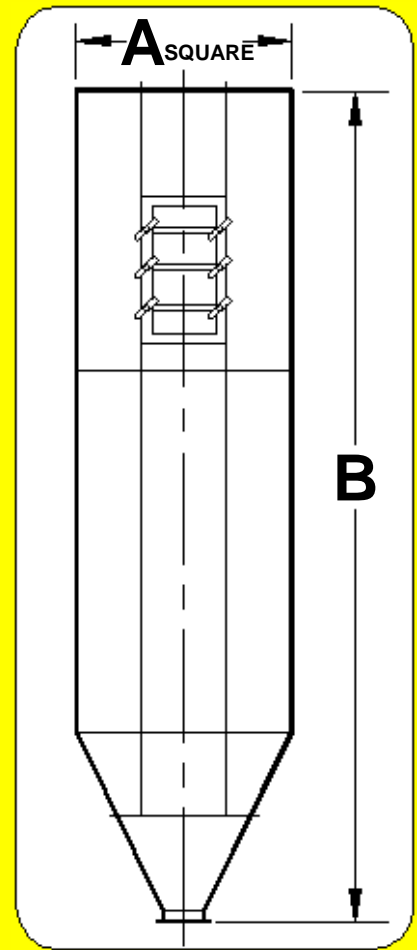
SX SERIES

Side Removal
Models 25 Thru 196



KX SERIES

Knee High Top Removal
Models 25 Thru 196



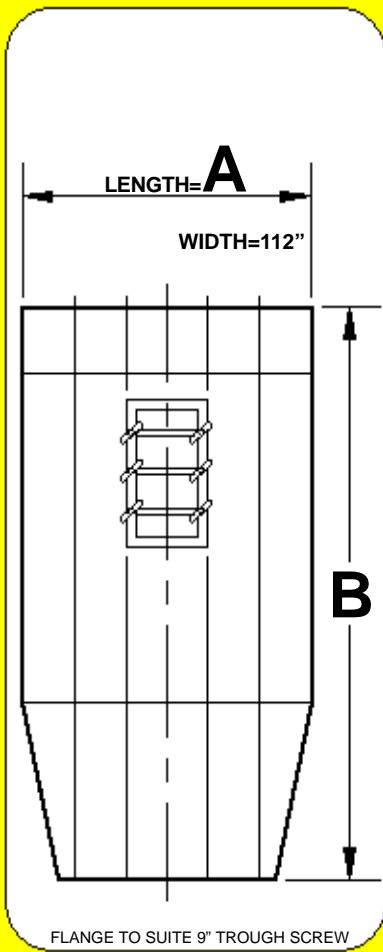
WX SERIES

Walk In Top Removal
Models 49 Thru 196

MODEL NO. SX KX WX	FILTER AREA SQ. FT.				DIMENSIONS (INCHES)												
	6 FT. FILTERS	7 FT. FILTERS	8 FT. FILTERS	10 FT. FILTERS	"A" ALL SERIES	"B" SX SERIES				"B" KX SERIES				"B" WX SERIES			
						6 FT. FILTERS	7 FT. FILTERS	8 FT. FILTERS	10 FT. FILTERS	6 FT. FILTERS	7 FT. FILTERS	8 FT. FILTERS	10 FT. FILTERS	6 FT. FILTERS	7 FT. FILTERS	8 FT. FILTERS	10 FT. FILTERS
25	235	275	314	392	40	124	136	148	172	124	136	148	172	----	----	----	----
36	339	396	452	565	48	131	143	155	179	131	143	155	179	----	----	----	----
49	461	539	615	769	56	142	154	166	190	142	154	166	190	246	258	270	294
64	602	704	804	1005	64	149	161	173	197	149	161	173	197	253	265	277	301
84	763	891	1017	1272	72	160	172	184	208	160	172	184	208	260	272	284	308
100	942	1100	1256	1570	80	171	183	195	219	171	183	195	219	267	279	291	315
121	1139	1331	1520	1900	88	178	190	202	226	178	190	202	226	274	286	298	322
144	1356	1584	1809	2260	96	189	201	213	237	189	201	213	237	281	293	305	329
169	1591	1859	2123	2653	104	200	212	224	248	200	212	224	248	288	300	312	336
196	1846	2156	2462	3007	112	211	223	235	259	211	223	235	259	295	307	319	343

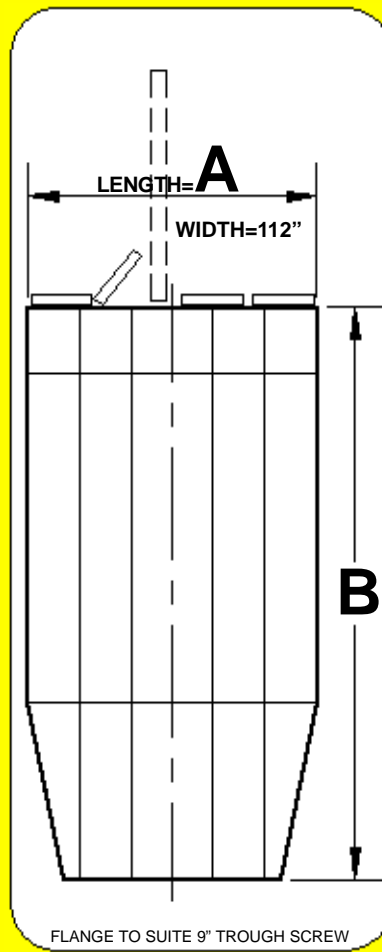
All "A" Dimensions are inside (I.D.).
Dimensions subject to change without notice

TYPICAL DIMENSIONS AND SPECIFICATIONS



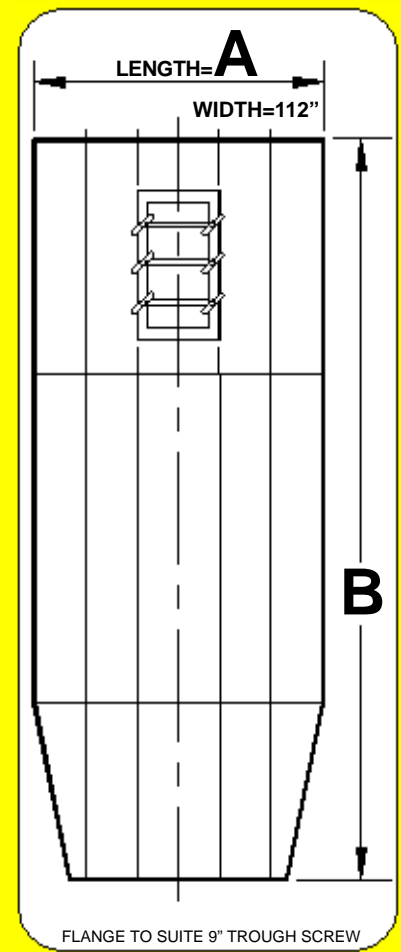
SXR SERIES

Side Removal



KXR SERIES

Knee High Top Removal



WXR SERIES

Walk In Top Removal

MODEL NO. SXR KXR WXR	CLOTH SQ. FT. 6 FT. FILTERS	DIMENSIONS (INCHES)					
		SXR A	SXR B	KXR A	KXR B	WXR A	WXR B
210	3297	120	254	120	254	120	335
224	3516	128	254	128	254	128	335
238	3736	136	254	136	254	136	335
252	3956	144	254	144	254	144	335
266	4176	152	254	152	254	152	335
280	4386	160	254	160	254	160	335
294	4616	168	254	168	254	168	335
308	4835	176	254	176	254	176	335
322	5055	184	258	184	258	184	335
336	5275	192	258	192	258	192	335
350	5495	200	258	200	258	200	335
364	5714	208	258	208	258	208	335

MODEL NO. SXR KXR WXR	CLOTH SQ. FT. 6 FT. FILTERS	DIMENSIONS (INCHES)					
		SXR A	SXR B	KXR A	KXR B	WXR A	WXR B
378	5934	216	258	216	258	216	335
392	6154	234	258	234	258	234	335
406	6374	232	258	232	258	232	335
420	6594	240	258	240	258	240	335
434	6813	248	262	248	262	248	335
448	7033	256	262	256	262	256	335
462	7253	264	262	264	262	264	335
476	7473	272	262	272	262	272	335
490	7693	280	262	280	262	280	335
504	7912	288	262	288	262	288	335
518	8132	296	262	296	262	296	335
532	8352	304	262	304	262	304	335

Units available in larger sizes - CONTACT FACTORY
Dimensions subject to change without notice

STANDARD FEATURES

- Solid State Electronic Sequential Timer In NEMA 4 enclosure
- # 12 GA. body construction to withstand 17" W.C. negative pressure
- 60 degree hopper of # 12 GA. construction
- Trough hopper on Sizes 210 and up
- Hinged and clamped weather-tight access door
- 16 oz. Polyester filter bags
- Top or bottom bag removal arrangements
- 12 wire # 11 ga. steel bag cages
- Reverse jet cleaning mechanism Including 6" diameter compressed air header, 1' diameter diaphragm valves, 1/8" solenoid valves mounted in NEMA 4 enclosure, pressure gauge, condensate drain petcock
- 2" angle mangrid below bags
- Hopper section complete with bolted access door, level indicator mount coupling or hole, structural channel for vibrator mount

OPTIONS

- Explosion Proof Electrical Enclosures (NEMA 7 and NEMA 9) Differential Demand Pulse Cleaning
- Custom Controls and Automation
- Explosion Vent
- 70 degree hopper
- Multiple pyramid hoppers on sizes 210 and up
- Platforms,caged and uncaged ladders
- handrails, structural supports
- Variety of filter media including Nomex, PTFE membrane, Huyglas, Polypropylene, Singed Polyester. Cartridge Filters also available
- 12' Bags and Cages available
- Clean Air Outlet and/or Dirty Air Inlet
- Rotary Airlock discharge valve
- Double Dump discharge valve
- Screw Conveyors
- Mainenance Slide Gate
- 55 gallon barrel assembly with 8"flex hose and slide gate
- Level Indicators
- Hopper Agitation
- Insulation to prevent condensation



10200 W. 75th. Street, Suite 102 Shawnee Mission, Kansas 66204