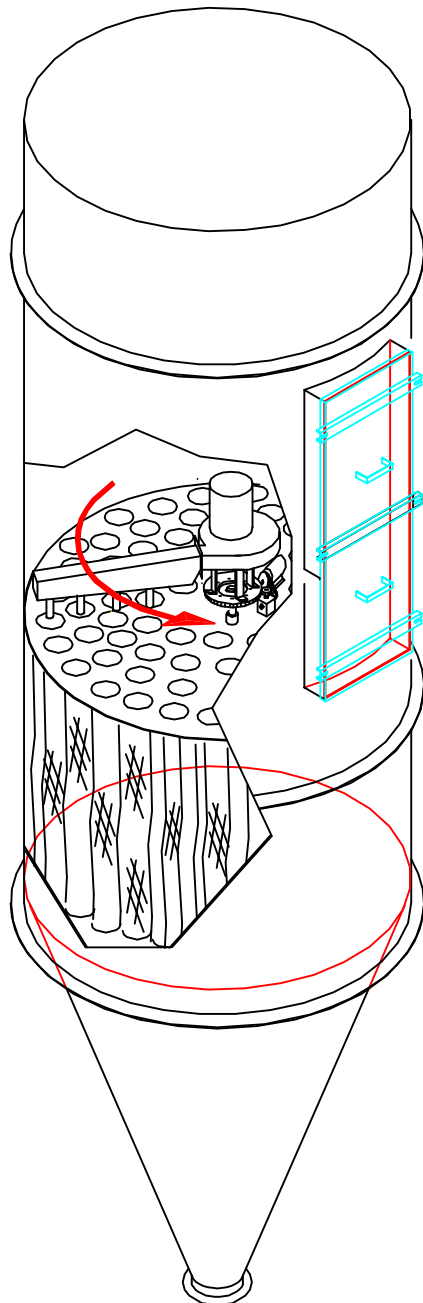


10200 W. 75th St., Shawnee Mission, KS 66204
TEL: 913-677-5777 FAX: 913-677-0674
techair@techairinc.com www.techairinc.com

RD-FILTRA KLEEN

A HIGHLY EFFICIENT BAG FILTER



SUPERIOR DESIGN PROVIDES SUPERIOR OPERATION WITH LESS MAINTENANCE.

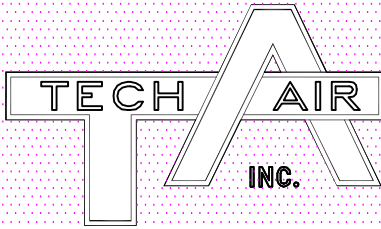
UNIT DOES NOT REQUIRE ROTATING THE ENTIRE FAN AND MOTOR ASSEMBLY, NO ROTATING AIR OR ELECTRICAL CONNECTIONS. ONLY THE FAN SCROLL AND AIR MANIFOLD REVOLVES.

WALK-IN PLENUM WITH TOP TOP REMOVABLE BAGS ALLOWS FOR SERVICE IN ALL WEATHER CONDITIONS.

HEAVY DUTY CONSTRUCTION OF CARBON OR STAINLESS STEEL.

AVAILABLE WITH ALL TYPES OF FILTER MEDIA, INCLUDING CARTRIDGE ELEMENTS. IN MANY CASES TECH-AIR CAN MATCH BAGS OF OTHER MANUFACTURERS FOR PARTS STANDARIZATION. CHECK WITH A TECH-AIR REPRESENTATIVE FOR DETAILS.

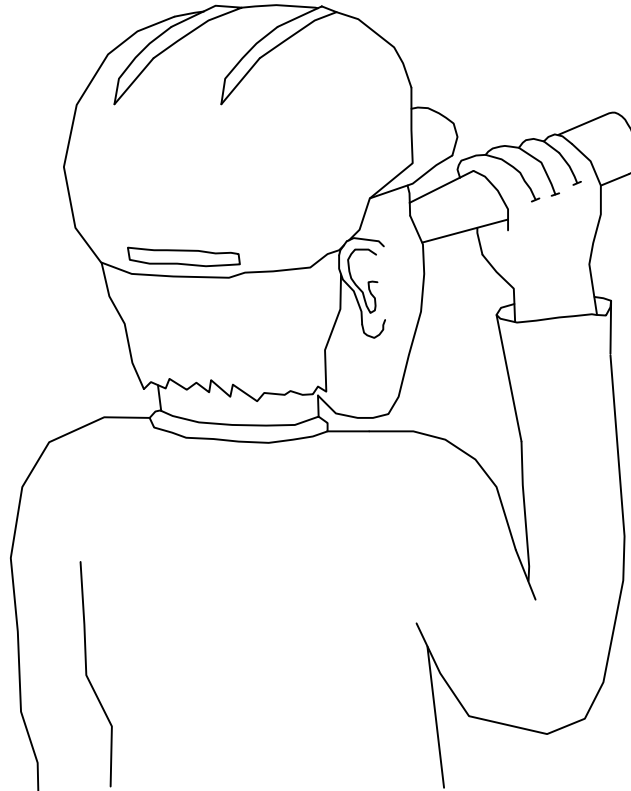
CONTINUOUS CLEANING LOW PRESSURE FILTER THAT UTILIZES A PRESSURE BLOWER FAN FOR CLEANING AIR



10200 W. 75th St., Shawnee Mission, KS 66204
TEL: 913-677-5777 FAX: 913-677-0674
techair@techairinc.com www.techairinc.com

RD-FILTRA KLEEN

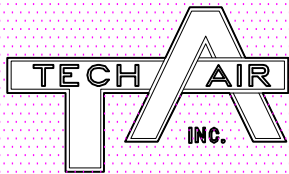
A HIGHLY EFFICIENT BAG FILTER



**IT'S NOT WHAT YOU SEE THAT COUNTS,
IT'S WHAT YOU DON'T SEE THAT'S IMPORTANT!**

ON THE RDFILTRA-KLEEN YOU WON'T SEE:

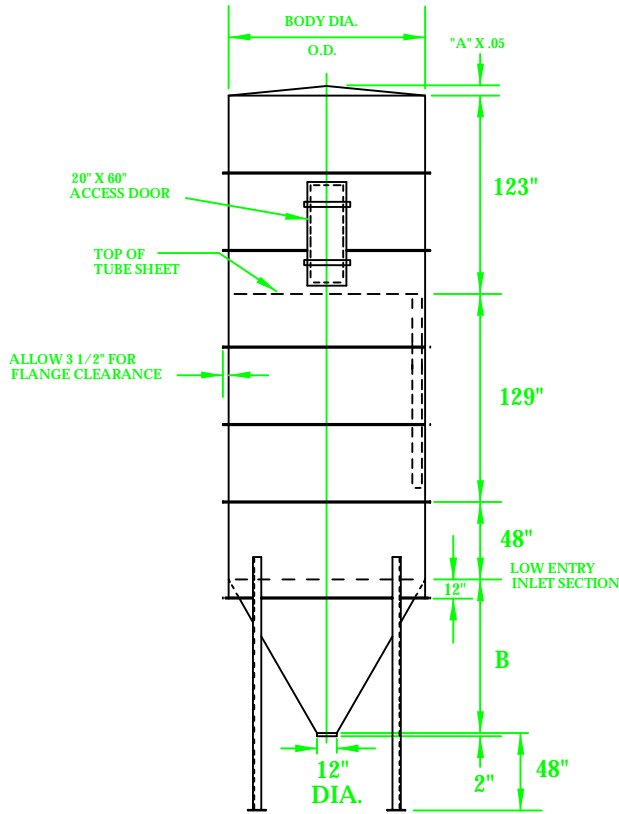
- * COMPRESSED AIR
- * POSITIVE DISPLACEMENT PUMP
- * VALVES OF ANY KIND
- * CHAIN DRIVES
- * ROTATING ELECTRICAL CONNECTIONS.
- * DIRTY AIR PLENUM
- * BAG CHANGING
- * CONTROL TIMERS
- * AIR LINE FREEZE UPS
- * ROTATING SLIP AIR CONNECTIONS



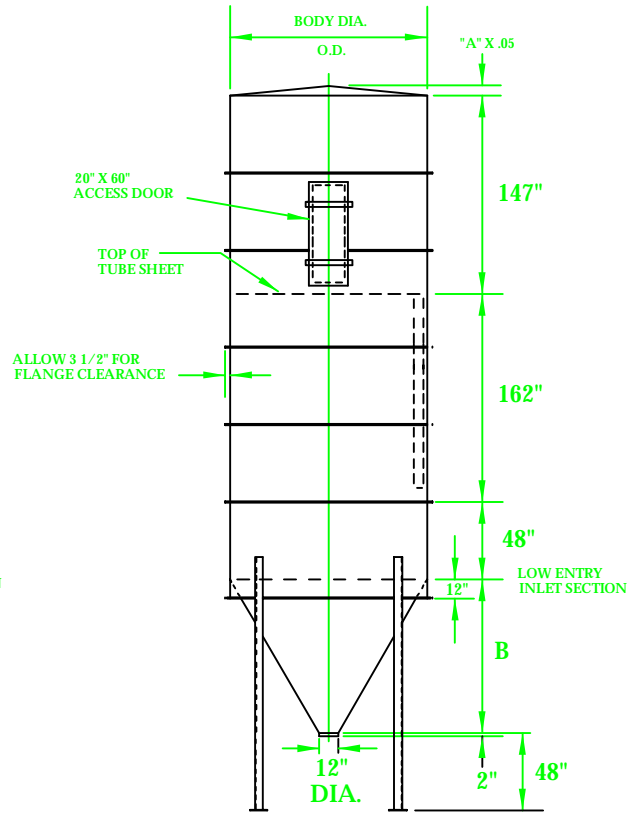
10200 W. 75th St., Shawnee Mission, KS 66204
 TEL: 913-677-5777 FAX: 913-677-0674
 techair@techairinc.com www.techairinc.com

RD-FILTRA KLEEN

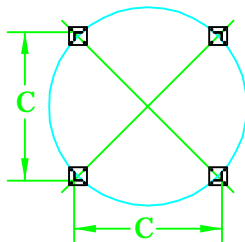
A HIGHLY EFFICIENT BAG FILTER



10 FT. BAG FILTERS



12 FT. BAG FILTERS



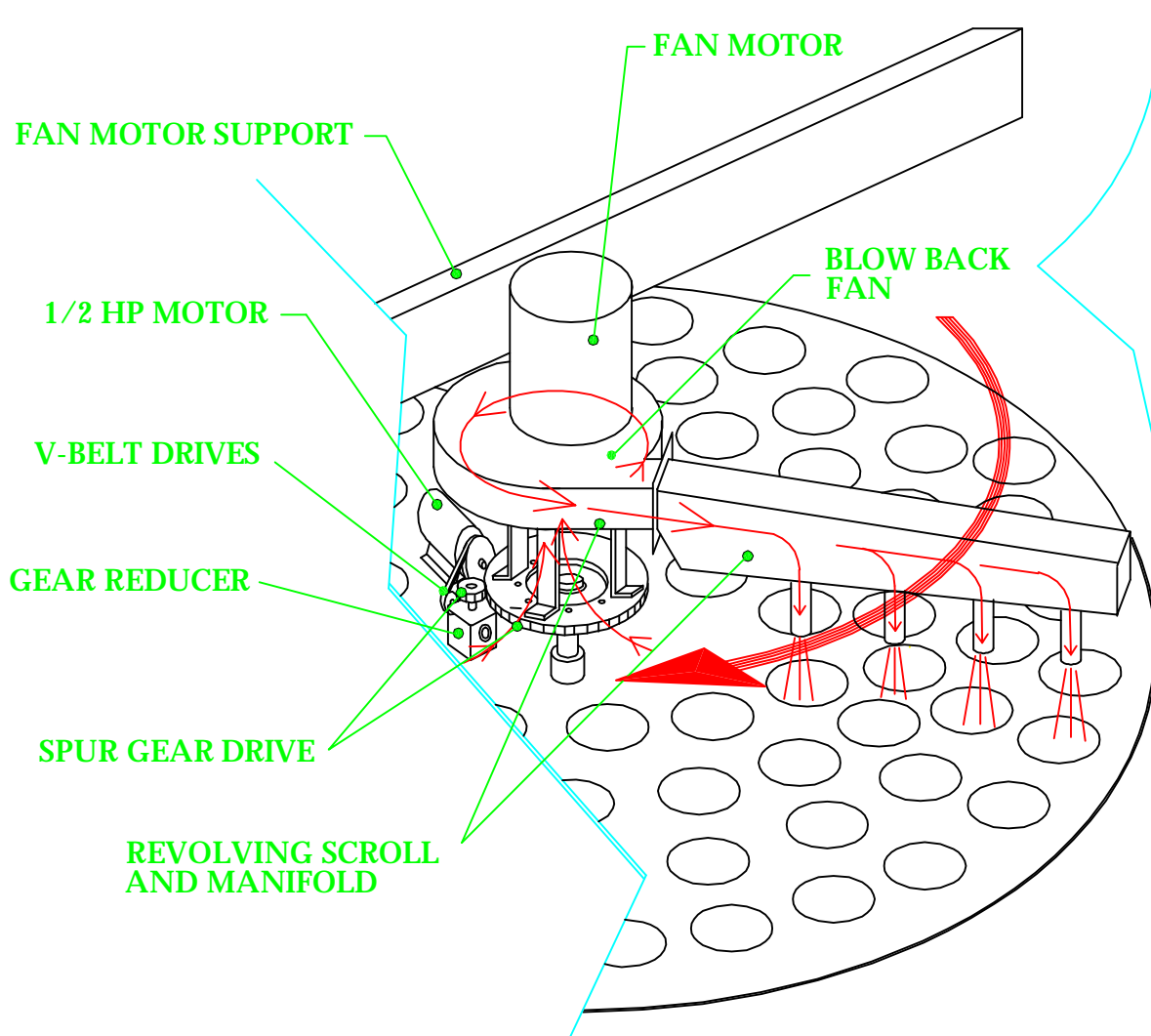
SUPPORT LEGS

MODEL CODES	
BAG CIRCLES	MODEL
# OF BAGS	LENGTH OF BAGS
SQ. FT. OF MEDIA	
7 RD 256-10-3686	

DIMENSIONS AND SIZING (Tech-Air reserves the right to change any dimension at any time)

MODEL NO.	AREA CLOTH SQ-FT	BLOWER HP	DRIVE HP	BAG CIRCLES	NO. BAGS	BODY O.D. dia inches	DIM B	DIM C
3RD72-10-1036	1036	7.5	1/2	3	72	90	80"	80"
3RD72-12-1243	1243	10						
4RD108-10-1555	1555	10	1/2	4	108	106	93	93
4RD108-12-1866	1866	10						
5RD152-10-2188	2188	15	1/2	5	162	122	107	107
5RD152-12-2625	2625	15						
6RD200-10-2880	2880	15	1/2	6	200	138	121	121
6RD200-12-3456	3456	15						
7RD256-10-3686	3686	15	1/2	7	256	154	135	135
7RD256-12-4423	4423	20						
8RD320-10-4608	4608	20	1/2	8	320	170	149	149
8RD320-12-5529	5529	20						
9RD388-10-5587	5587	20	1/2	9	388	186	163	163
9RD388-12-6704	6704	25						
10RD464-10-6681	6681	25	1/2	10	464	202	177	177
10RD464-12-8017	8017	30						
11RD544-10-7833	7833	30	1/2	11	544	218	191	191
11RD544-12-9447	9447	30						
12RD632-10-9100	9100	30	1/2	12	632	234	205	205
12RD632-12-10920	10920	40						

RD-FILTRA KLEEN / HOW IT WORKS



BAGS ARE CLEANED BY BLOWING LOW PRESSURE AIR FROM THE FAN IN A COUNTER OR REVERSE FLOW DIRECTION. CLEANING AIR IS DELIVERED VIA A REVOLVING FAN SCROLL AND MANIFOLD.

HIGH VELOCITY JETS FOR EFFICIENT CLEANING

NOTE THAT THE FAN MOTOR AND WHEEL (WITH THE WHEEL ATTACHED TO THE MOTOR) ARE MOUNTED TO THE STRUCTURAL STEEL. THEY ARE FIXED AND DO NOT ROTATE. ONLY THE FAN SCROLL WITH THE MANIFOLD CONTAINING AIR JETS ROTATE. ROTATION IS PROVIDED BY A 1/2 HP MOTOR WITH GEAR MOTOR AND SPUR GEAR DRIVE.